



Setup and Installation guide

Contents

1. Getting Help	2
2. System Requirements.....	2
3. Loki Architecture and Installation Types.....	3
4. Installation	4
5. First Run	7
6. Licencing	8

1. Getting Help

For help, please email support@digitalvision.se or contact one of the Digital Vision offices for support. Contact details can be found on the website at <http://www.digitalvision.se>.

2. System Requirements

Loki Full Standalone Installation

Operating system: 64bit Windows 7, Windows 10*, Windows Server 2012, 2012 R2, 2016

CPU: 2 or more core CPU (Dual CPU recommended)

RAM: minimum 8GB (12GB+ recommended)

Display: 1024x768 or higher

HDD: 4GB or more free space (SSD recommended)

LokiClient Only

Operating system: 64bit Windows 7, Windows 10, Windows Server 2012, 2012 R2, 2016

CPU: 2 or more core CPU (dual CPU recommended)

RAM: minimum 1GB (8GB needed for Processing Preview)

Display: 1024x768 or higher

HDD: 2GB or more free space (SSD recommended)

LokiServer Only

Operating system: 64bit Windows 7, Windows 10, Windows Server 2012, 2012 R2, 2016

RAM: minimum 1GB

HDD: 2GB or more free space.

LokiNode Only

Operating system: 64bit Windows 7, Windows 10*, Windows Server 2012, 2012 R2, 2016 (Only compatible with Windows 7 if using a THOR card).

CPU: 2 or more core CPU (dual CPU recommended)

RAM: minimum 8GB (12GB+ recommended)

HDD: 2GB or more free space (SSD recommended)

***Note about Windows 10 and QuickTime**

QuickTime import and export is only supported when using Windows 10 upgraded from a previous version of Windows. QuickTime is not supported in a clean installation of Windows 10.

3. Loki Architecture and Installation Types

Loki consists of 3 main components, which can be installed separately depending on your requirements.

LokiClient

LokiClient is the front end editor and monitor of the system. The LokiClient can be installed on any PC that has access to the LokiServer network

Typical functions of the LokiClient

- Create and delete jobs
- Create and edit presets
- Create and edit watch folders
- Monitor current and completed jobs
- Monitor nodes on the network.

LokiServer

LokiServer is the coordinator of the system containing the database and delegates the jobs to the available nodes.

LokiNode

LokiNode is the processing engine. Multiple nodes can be installed to process the queue of jobs faster.

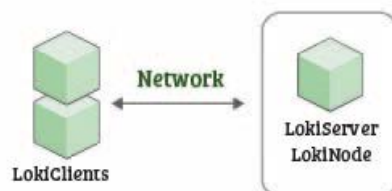
Installation examples:

Depending on your requirements, different Loki components can be installed across multiple PCs.

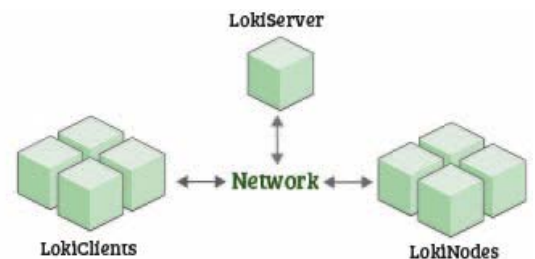
1. Standalone



2. Small Network



3. Full Network Installation



1. Standalone installation

All Loki components are installed on a single machine only.

2. Small Network installation

The LokiServer and LokiNode are installed on a single machine, perhaps in a server room and multiple clients access these over the network.

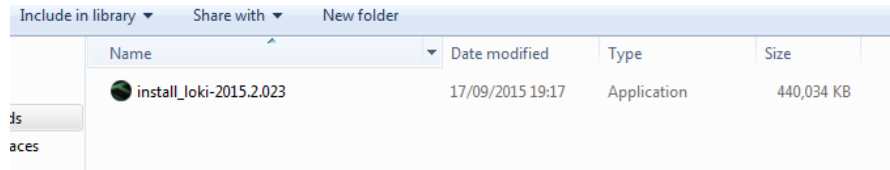
3. Full network installation

All Loki Components are installed on separate machines, with multiple nodes and clients connected. This type of installation is useful where extra processing is needed with multiple nodes.

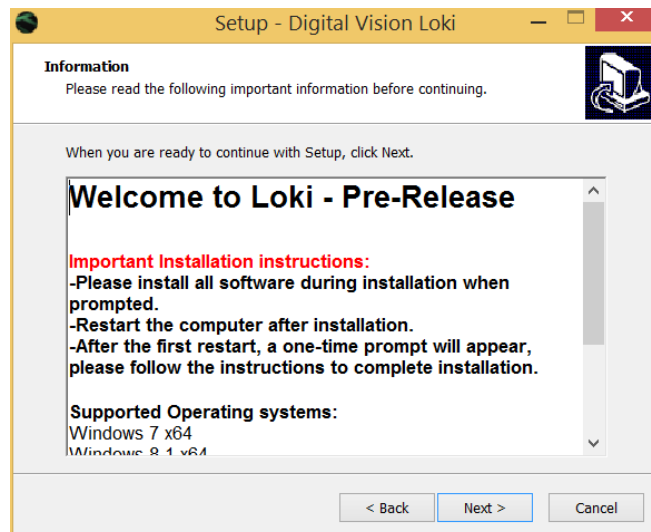
4. Installation

Installation of Loki is very easy, consisting of only a few simple steps:

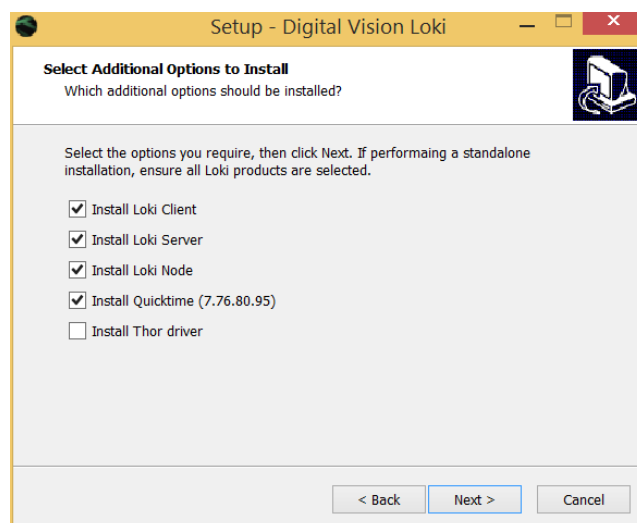
1. Run the installer file



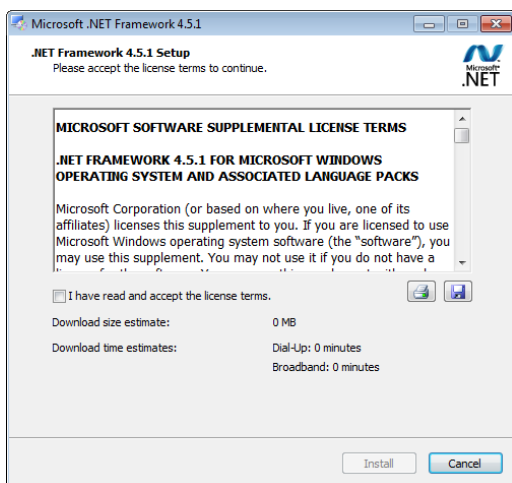
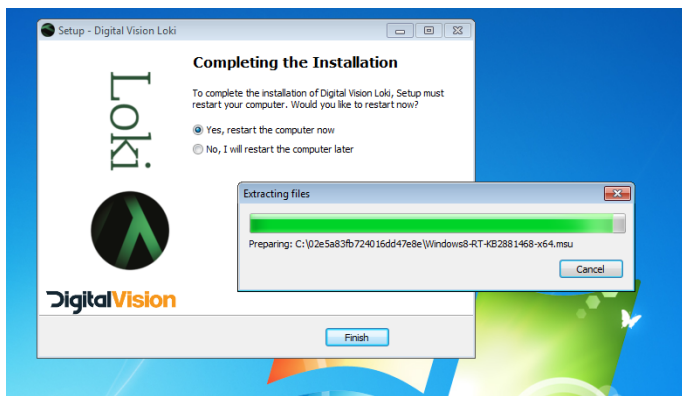
2. Read the installer information



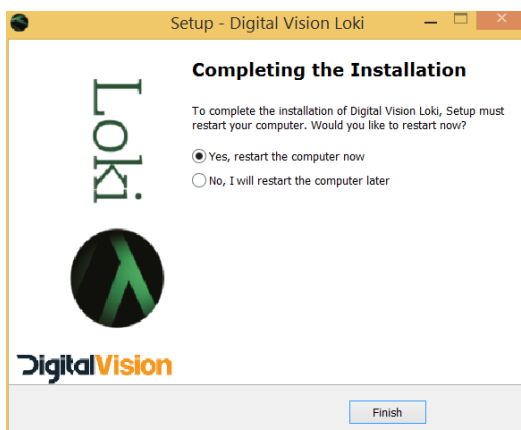
3. Select the required components. For a standalone installation, tick all the Loki components. Otherwise tick the required components for your installation type.



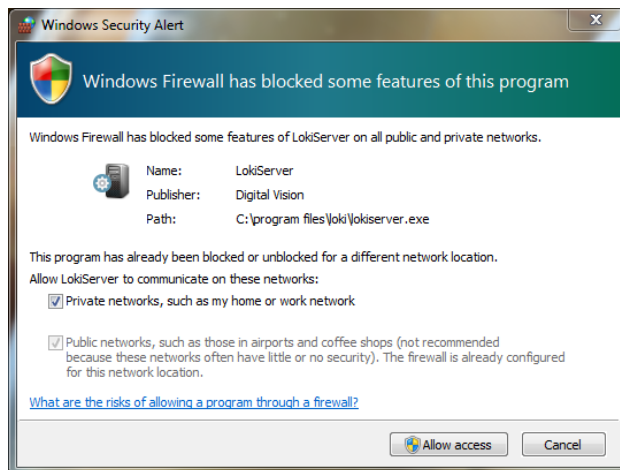
4. Before restarting, ensure the .NET installation has completed. This may take 5 minutes.



5. Restart the computer to complete setup.



6. Upon restart, a prompt may appear asking you to add a Windows Firewall exception. Select **Allow Access**.



7. Two new icons will now appear in the Windows system tray and these will run at Windows start up.



5. First Run

1. Click the LokiClient icon on the desktop to start using Loki.



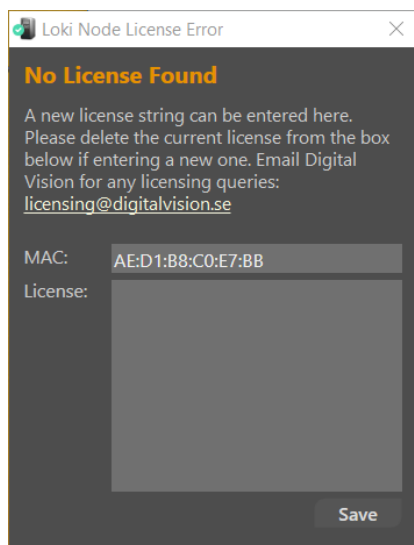
2. If no license has previously been installed, a license dialogue box will appear. If you already have been given a license, enter this in the text box and click **Save**. Otherwise copy the MAC Address provided and send it to licensing@digitalvision.se. Press cancel to close the application, whilst the license is obtained.

When a license has been obtained, re-run the LokiClient and enter the license. Copy the full license key into the box.

A Loki license key looks like this:

Loki 2015.3 ACD1B8C0E7BB 16-Oct-2015 360 AdvCodecs ExtFormats DVOFULL EBA0E150496CE9FF5AC3

Press **Save** and the LokiClient application will open.



6. Licencing

Each Loki Node is licensed by a Licence key provided by Digital Vision.

Checking Licenses

The license information for each node can be found using the LokiClient. Inside the monitoring tab, each node is listed with the relevant details.

Nodes connected						
IP Address	Hostname	Status	CPU %	Node Version	Engine Version	Licenses
172.16.25.13	Dan-work	Unknown	18.5%	2015.3.027	Loki 2015.3.018	DVOFULL License time remaining: 242 days

Node identity

License options

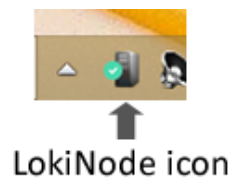
License duration

Editing a license

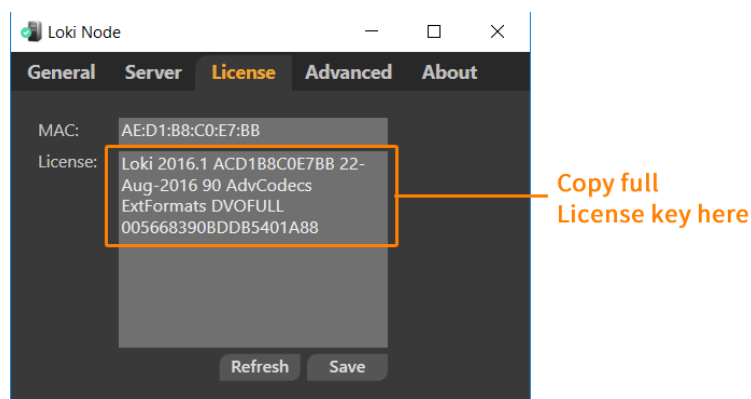
Entering a new licence or editing an existing one can be performed using the LokiNode application, or with the Node License manager, which is found in the Monitoring tab of the client.

Using the Loki Node to edit licenses

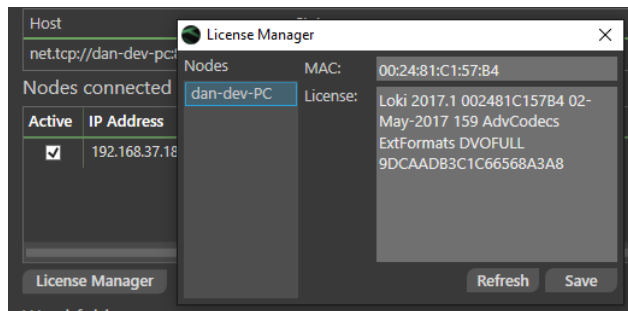
The LokiNode can be opened by double clicking on the icon in the system tray:



Inside the LokiNode application, enter the new licence key provided, in the text box as shown below. If there is an existing license, please clear this first. Click the **Update** button to save the new licence.



Using the Loki Client Node License manger



The Loki client provides an easy way to update all Node licenses in one single place, without having to access each node. This is helpful if you have many nodes on separate computers.

Open up the License manager from the Loki Client Monitoring tab, and simply select the node on the left hand list. Once selected, you can read the MAC address and enter or replace the license for the selected node. Press Save to confirm changes.

Any licensing queries, please email licensing@digitalvision.se